

WEDA LINE

Submersible Pumps WEDA 30

Instructions and spare parts catalog



Manual number: 470W367053_ENG_NO.doc

Rev : H

PM number: 2954 5290 00



MASKINSALG A/S

UTSTYR FOR INDUSTRI OG ANLEGG

Blindheimsveien 1, 5131 Nyborg

www.maskinsalg.com

SALG - SERVICE - UMLEIE

Tlf. 55 19 96 20

GENERAL SAFETY RULES



WARNING

Read and understand all instructions

Failure to follow all instructions listed below, may result in electric shock, fire and/or serious injury.

Before using the machine, read carefully these instructions and keep them in a safe place.

These safety recommendations have been compiled from international safety standards. Local regulations must also be checked and observed.

SAVE THESE INSTRUCTIONS



WORK AREA

Keep your work area clean and well lit. Cluttered benches and dark areas invite accidents.

Do not operate pumps in explosive atmospheres, such as presence of flammable liquids, gases or dust. Pumps creates sparks which may ignite the dust or fumes.

Keep bystanders, children, and visitors away while operating a pump. Distraction can cause you to loose control.



ELECTRICAL SAFETY

Pumps must be plugged into an outlet properly installed and grounded in accordance with all codes and ordinances. Never remove the grounding prong or modify the plug in any way. Do not use any adaptor plugs. Check with a qualified electrician if you are in doubt as to whether the outlet in properly grounded. If the pumps should electrically malfunction or break down, grounding provides a low resistance path to carry electricity away from the user.

Avoid body contact with grounded surfaces such as pipes, radiators, ranges and refrigerators. There is an increase risk of electric shock if your body is grounded.

Do not abuse the cord. Never use the cord to carry the pumps or pull the plug from an outlet. Keep cord away from heat, oil, sharp edges or moving parts. Damaged cords increase the risk of electric shock.

Use a network protected by a ground fault circuit interrupter.



PERSONAL SAFETY

Stay alert, watch what you are doing and use common sense when operating a pump. Do not use pump while tired or under influence of drugs, alcohol or medication. A moment of inattention while operating pumps result in serious personal injury.

Dress properly. Do not wear loose closing or jewellery. Contain long hair. Keep your hair, clothing, and gloves away from moving parts. Loose clothes, jewellery, or long hair can be caught in moving parts.

Always use approved safety equipment. Always wear eye protection. The following safety equipment applies to operators and other personnel in the immediate vicinity of the working zone.

- ⇒ Safety helmet.
- ⇒ Ear protectors.
- ⇒ Dust mask in dusty environments.
- ⇒ Protective gloves.
- ⇒ Protective shoes.
- ⇒ Goggles.

Remove adjusting keys or switches before turning the pump on. A wrench or a key that is left attached to a rotating part of the pump may result in personal injury.

The admissible sound level of 85 dB (A), can be exceeded because of the machine and/or the application. Long time exposure to loud noise without ear protectors can cause permanent damage to hearing.



PUMP USE AND CARE

Never operate the pump without the strainer. It both protects the pumps and the pipes.

Do not force pump. Use the correct pump for your application. The correct pump will do the job better and safer at the rate for which it is designed.

The use of the machine is restricted to the applications specified in the product literature.

Disconnect the plug from the power source before making any adjustments, changing accessories, or storing the pump. Such preventive safety measures reduce the risk of starting the pump accidentally.

Store idle pumps out of reach of children and other untrained persons. Pumps are dangerous in the hand of untrained users.

Maintain pumps with care. Properly maintained pumps are less likely to bind and are easier to control.

Check for misalignment or binding of moving parts, breakage of parts, and any other condition that may affect the pumps operation. If damaged, have the pump serviced before using. Many accidents are caused by poorly maintained pumps.

The machine must not be modified without prior consent of the manufacturer. Use only original parts. If modifications are made without prior consent of the manufacturer there is a risk of serious injury to the personal.



SERVICE

Pump service must be performed only by qualified repair personnel. Service or maintenance performed by unqualified personnel could result in a risk of injury.

When servicing a pump, use only identical replacement parts. Follow instructions in the Maintenance section of this manual. Use of unauthorized parts or failure to follow Maintenance Instructions may create a risk of electric shock or injury.

Make sure that the signs about using, safety, and maintenance are always legible.

Always change damaged parts immediately. Change wear parts in due time.

GENERAL

The **WEDA** submersible drainage pumps are designed for pumping lightly contaminated water.

DESIGN

The heavy duty light weight aluminium construction includes a cooling jacket ensuring adequate motor cooling at all times.

The **WEDA LINE** pumps are in 'plug and pumping design', with built-in full overload motor protection. The versions with level float switch allow automatic operation.

The unique cartridge type seal package can be easily replaced on site with only minimum downtime.

For demanding applications as in construction works and mining, the impellers are made for wear resistant Hi-Chrome iron and all other components are rubber lined.

The impeller clearance is easily adjustable to compensate for wear.

TECHNICAL DATA

Pump		WEDA30
Discharge	mm - (in)	80 (3") 100 (4")
Suitable for media with pH		5 - 8
Maximum water temperature		40°C
Maximum submersible depth	m - (ft)	20 - (67)
Weight (excluding cable)	kg - (lb)	20 - (44.1)
Strainer	WEDA30L WEDA30N	Rectangular holes 9 x 64 mm Rectangular holes 7 x 34 mm
Speed rpm	50Hz (60Hz)	2980 - (3550)
Stator insulation class		F (155°C)

Voltages V	Phases	Frequency Hz	Rated current A		Rated electrical power (kW)	
			L	H	L	H
220-240	1	50	11.8	12.6	2.7	2.9
380-415	3	50	4.5	4.4	2.7	2.6
220-240	1	60	15.3	16.3	3.5	3.7
440-460	3	60	4.2	4.4	2.8	2.8

Other voltages upon request

IMPORTANT

The above information is a general description only, is not guaranteed and contains no warranties of any kind

Power cables (50Hz)

15 meters 3x2.5 mm² for 220-240 V ' 1 phase

15 meters 4x1.5 mm² for other voltages.

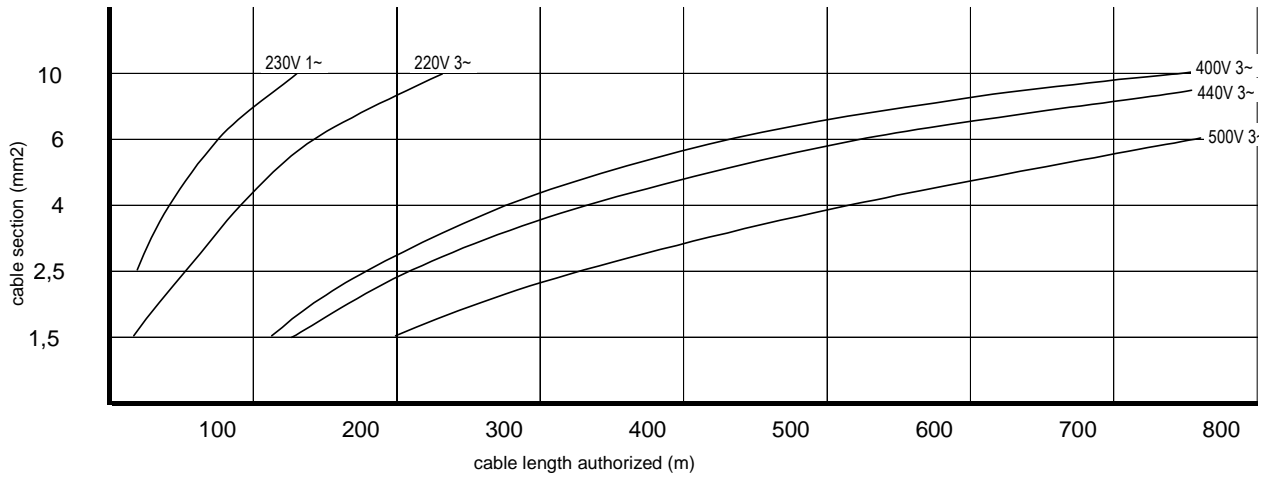
All cables polychloroprene type HO7RN-F .

Power cables (60Hz) only for CSA approved types

20 meters SOW 3xAWG14 for 220V-240V - 1 phase

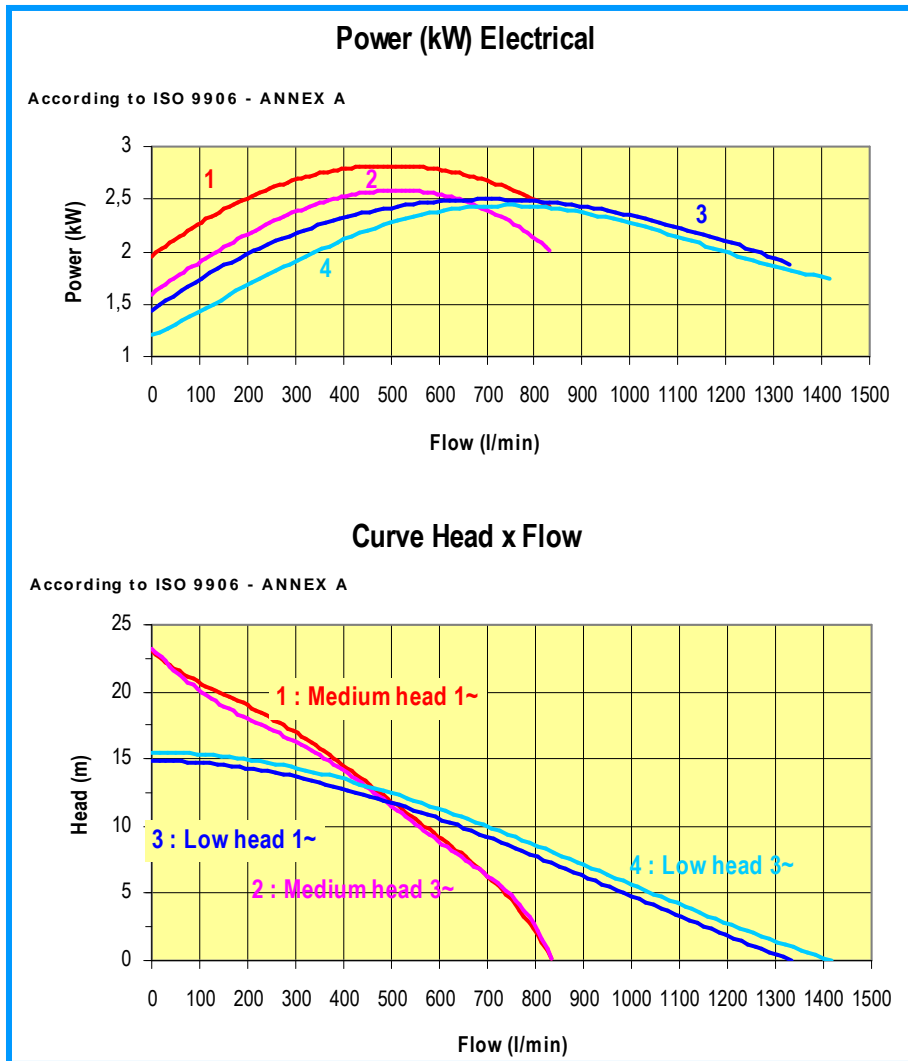
20 meters SOW 4xAWG16 for 440V-460V - 3 phases

INSTRUCTIONS MANUAL – WEDA 30



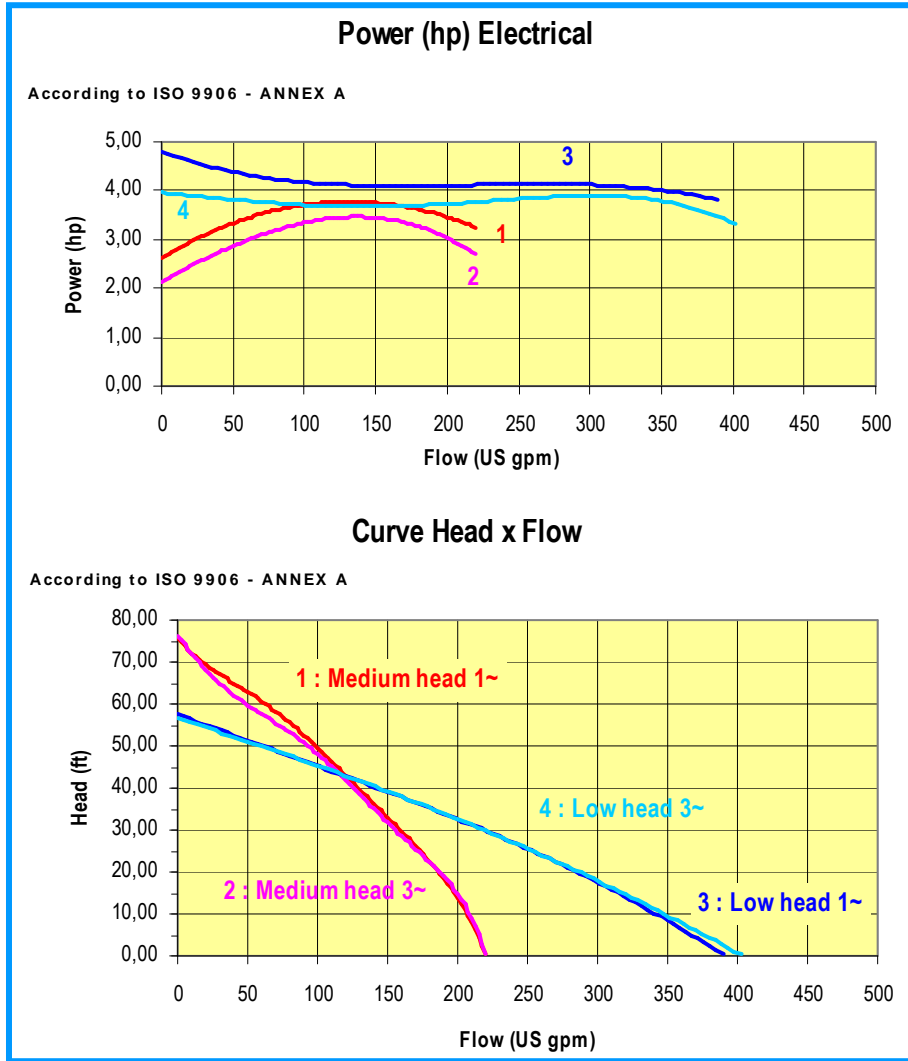
HYDRAULIC CHARACTERISTICS

50Hz

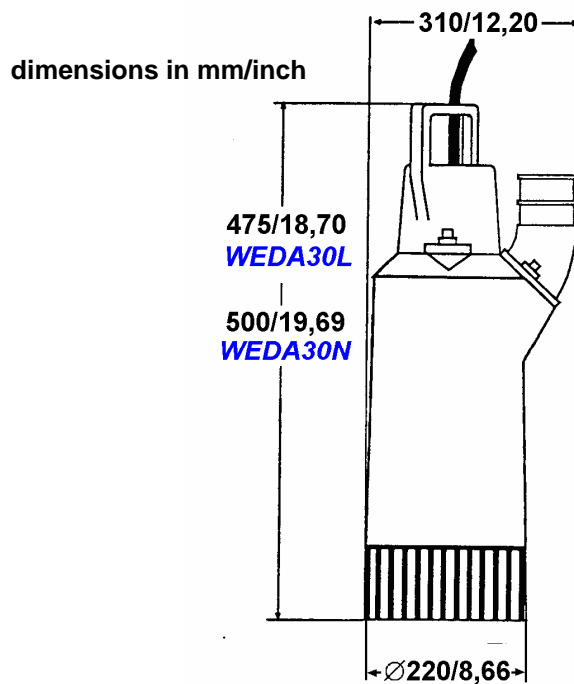


INSTRUCTIONS MANUAL – WEDA 30

60Hz



DIMENSIONS



INSTALLATION



The pump must not be used in an explosive / inflammable environment or used to pump inflammable liquids !

- Route the cables so that connectors do not lie in the water. Consider the risk of electrical accident.



Never lift the pump by its power cable !

- Connect a discharge hose of approved pressure class.
- The discharge hose may be thrown off when the pump starts.
- No one must be allowed in the water, e.g. swimming pools, when the pump is running.
- Check that the pump is standing steady, or suspend it from its lifting ring.
- Check the direction of rotation, pointed by the starting kick arrow printed in the outer casing (anti-clockwise)
 - The pump will start instantaneously when it is connected to the power supply.
 - The pump may kick violently when it starts.
 - In case of wrong direction of rotation two phases should be inverted from the supply (three phases voltage only).

Direction of rotation



ELECTRICAL CONNECTION

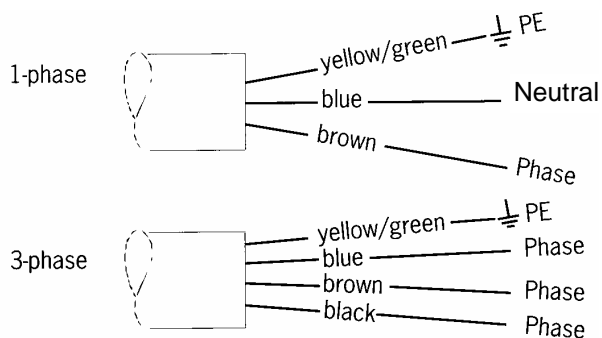
Check that the details on the pump data plate match with the mains voltage and frequency.



The electrical installation must be carried out by a qualified electrician !

Local installation regulations must be followed !

Make sure that the pump is properly earthed. The earth conductor must be slightly longer than the phase conductors. If the motor power cable is accidentally pulled off, the earth conductor must be the last conductor to be removed from the terminals.



"USE WITH APPROVED MOTOR CONTROL THAT MATCHES MOTOR INPUT IN FULL LOAD AMPERES WITH OVERLOAD ELEMENTS SELECTED OR ADJUSTED IN ACCORDANCE WITH THE CONTROL INSTRUCTIONS"

BUILT-IN MOTOR PROTECTION



Check that the pump is disconnected from the power supply before starting any work !

The pump's built-in motor protection switches off the contactor automatically if the motor overheats. Then, the fault must be identified and corrected.

After cooling to normal working temperature, the motor protection switches on the contactor and the pump starts again.

TROUBLE SHOOTING

Fault location	Cause	Action
Pump will not start.	<ol style="list-style-type: none"> 1. Fuses blown 2. Broken cable 3. Power failure 4. Jammed impeller 5. Faulty contactor 6. Stator winding burnt-out 7. Incorrect phase sequence (3 phases) 	<ol style="list-style-type: none"> 1. Replace fuses 2. Service 3. – 4. Clean bottom of pump 5. Service 6. Service 7. Change 2 phases in plug
Pump starts, but stops again.	<ol style="list-style-type: none"> 1. Pump runs backwards (3 phases) 2. Pump connected to wrong voltage 3. Phase interruption 4. Strainer blocked 5. Insufficient water level 6. Voltage too low when using an extra cable 7. Water too hot 	<ol style="list-style-type: none"> 1. Change 2 phases in plug 2. Select the right voltage 3. Check fuses 4. Clean strainer 5. Stop the pump 6. Increase the extra cable section 7. Switch off power
Pump works, but delivers too small water volume .	<ol style="list-style-type: none"> 1. Impeller worn 2. Pump runs backwards (3 phases) 3. Hose dimensions unsuitable 4. Insufficient discharge head 	<ol style="list-style-type: none"> 1. Adjust pump/replace impeller 2. Change 2 phases in plug 3. Change to suitable hose 4. Select a bigger pump

MAINTENANCE

PUMP PERFORMANCE

To keep the pump performance, the gaps must be as small as possible. The gap between the impeller and the wear plate is adjustable with trim washers. The gap between the impeller and the diffusor is adjusted by alternatively tightening the nuts fixing the diffusor. After adjustment the impeller must be capable of rotation by hand.



Worn impeller can have very sharp edges . Wear safety gloves !

SHAFT SEAL UNIT

Topping-up with oil is required every four month (see fig.1)

<u>Company</u>	<u>Oil</u>
Statoil	Hydra Way HM32
Texaco	Ranco Oil HD32
Mobil	DTE24
Castrol	Hyspin AWS32
Shell	Tellus oil32

Quantity: 0,25 L

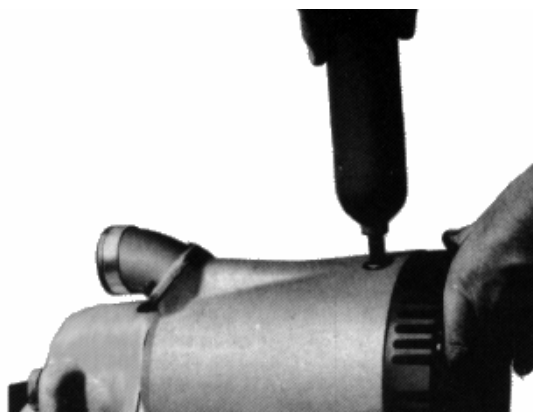


Fig 1

ACCESSORIES

FLOOR LEVEL BAND P/N 470W224848 (POS 73)

FLOAT SWITCH P/N 470W214842

WEDA30 series pump can be equipped with a float switch.

Switching on an off is regulated by the length of the float switch cable. See fig. 5, 6.

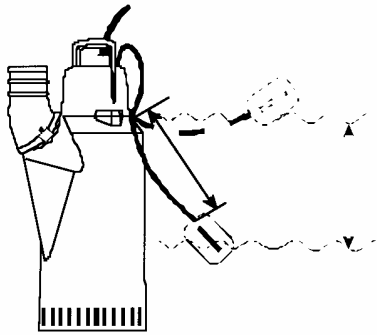


Fig. 5

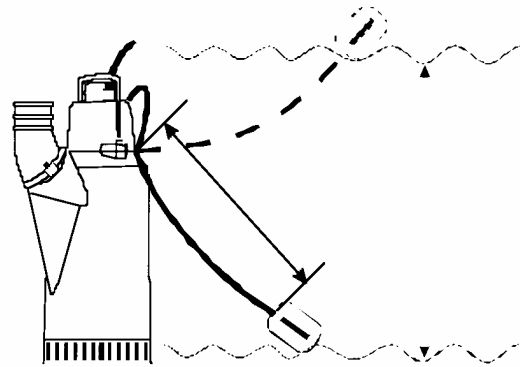
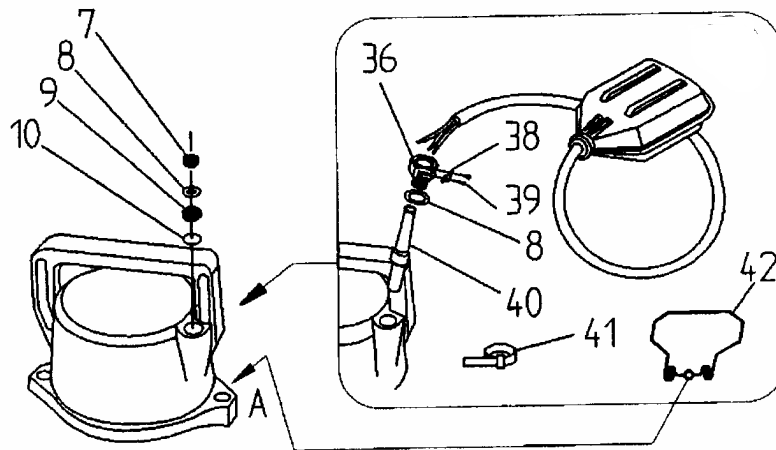


Fig. 6

ASSEMBLING OF FLOAT-SWITCH

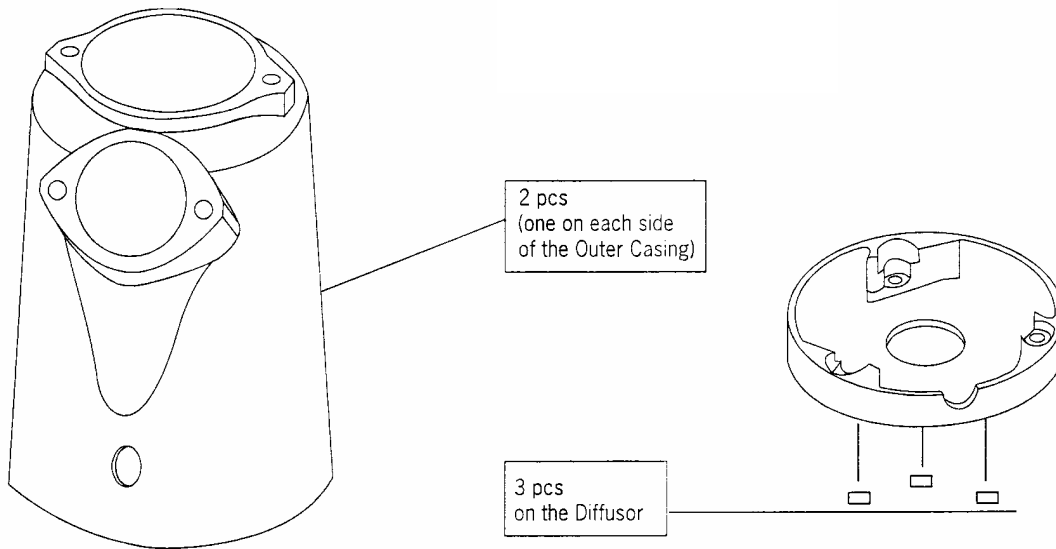


1. Dismantle pos. 7, 8, 9 and 10, use a hexagon key size 8.
2. Put pos. 36 and 8 on the cable.
3. Place pos. 40 approx. 300 mm on the cable, use soap water.
4. Assemble float-switch on the cover, use spanner size 19.
5. Assemble pos. 38 and 39, use screw driver.
6. Place pos. 41 on the cable .With this clamp (pos. 41) the cable can be shorten.
7. Dismantle M6 nut at A, place pos. 42 and put the nut back, use spanner size 10.Pos. 42 is a holder for the float at transport.

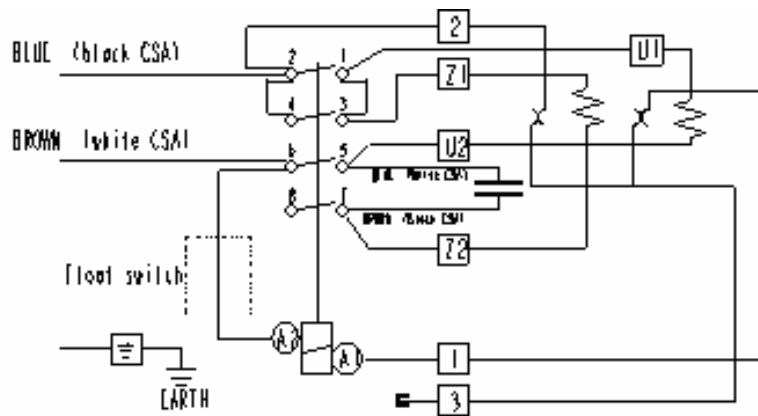
ZINC ANODES P/N 470W209289

When pumping salt water (which is highly aggressive towards aluminium), the pump should be protected with zinc anodes.

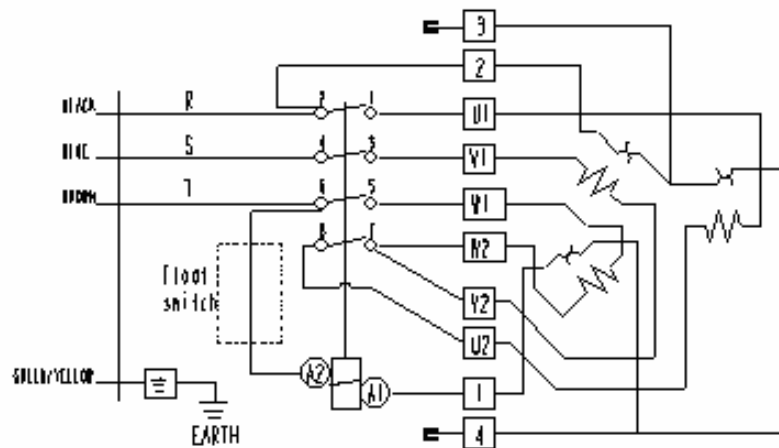
INSTALLATION



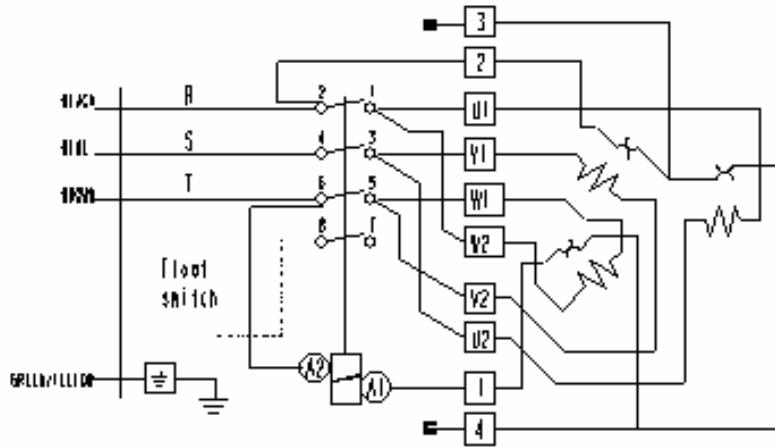
WIRING DIAGRAMS



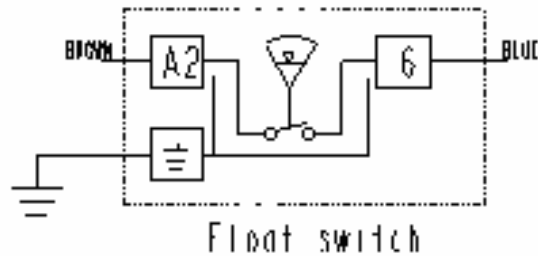
WIRING DIAGRAM 1 PHASE



WIRING DIAGRAM Y CONNECTION 3 PHASES



WIRING DIAGRAM Δ CONNECTION 3 PHASES

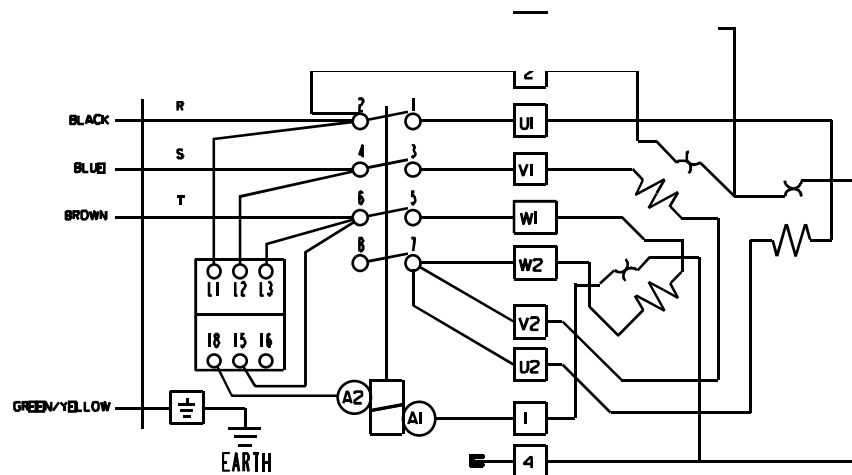


FLOAT SWITCH CONNECTIONS

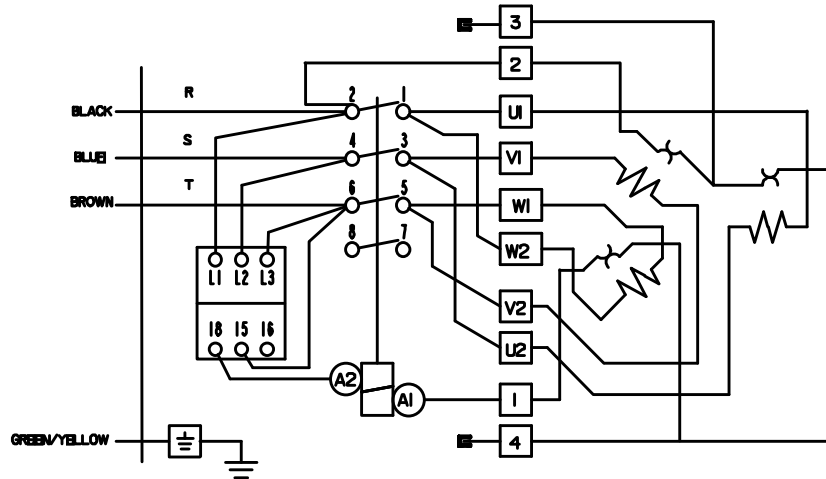
PUMPS WITH CONTROL RELAY.

The relay aims to control the direction of the rotation as well as the voltage supply. The pump will not start either if the phases sequence is not suitable or if one phase is missing. Therefore if the pump does not start:

1. Check the voltage supply: if wrong, correct the situation.
2. If the voltage supply is right, switch off the pump, then move the black wire of the cable from the cable terminal 2 to the terminal 4 and proceed in reverse order for the blue wire: from 4 to 2.
3. Switch on the pump, it has to rotate in the right direction and the relay led is lighted.



WIRING DIAGRAM Y CONNECTION 3 PHASES WITH CONTROL RELAY



WIRING DIAGRAM Δ CONNECTION 3 PHASES WITH CONTROL RELAY

SPARE PARTS CATALOGUE

RESERVDDELSTÄLLNING

Följande uppgifter ska lämnas vid beställning av reservdelar för att undvika leveransfel :

1. Maskintyp.
2. Maskinens serienummer.
3. Antal av önskad reservdel.
4. Reservdelens artikelnummer.
5. Reservdelens benämning.
6. Måttuppgifter vid beställning av metervara.

ERSATZTEILBESTELLUNG

Zur Vermeidung von Fehllieferungen sind bei der Bestellung von Ersatzteilen folgende Angaben zu machen :

1. Mashinentyp.
2. Herstellungsnummer.
3. Bestellmenge. (Quantity)
4. Ersatzteilbenennung. (Part N°)
5. Ersatzteilbenennung. (Description)
6. Massangaben bei Bestellung von Meterware.

PEDIDO DE RECAMBIOS

Para evitar errores en las entregas, deberá indicarse los siguientes datos al hacer un pedido de recambios :

1. Tipo de máquina.
2. Número de serie.
3. Cantidad de piezas deseadas. (Quantity)
4. Número de artículo de la pieza de recambio. (Part N°)
5. Denominación de la pieza. (Description)
6. Indíquese la medida al solicitar un artículo que se expide por metros.

ORDERING SPARE PARTS

To avoid errors in delivery, please give the following information when ordering spare parts :

1. Type of machine.
2. Machine serial number.
3. Quantity required.
4. Part number.
5. Parts description.
6. Dimensions when ordering per length.

ORDINI DI RICAMBI

Per evitare errori nelle consegne di ricambi, Vi preghiamo di comunicarci le seguenti informazioni al momento dell'ordinazione :

1. Tipo di macchina.
2. Numero di serie della macchina.
3. Quantità dei pezzi desiderati. (Quantity)
4. Numero di codice del pezzo. (Part N°)
5. Descrizione del pezzo di ricambio. (Description)
6. Misura, in caso di ordine per metro.

COMMANDE DE PIÈCES DE RECHANGE

Les indications suivantes doivent être fournies lors de la commande de pièces de rechange, afin d'éviter toute erreur de livraison :

1. Type de machine.
2. Numéro de série.
3. Quantité désirée de pièce de rechange. (Quantity)
4. Numéro de la pièce de rechange. (Part N°)
5. Description de la pièce de rechange. (Description)
6. Longueur en cas de commande par mètre.

SPARE PARTS

Note : To place spare parts order, use :

- The serial number of the machine
- The description and part number;

SPARE PART LIST

Ref	Designation	P/N	Qty -1--	Qty -3--
1	Cable 3 x 2.5mm ² , 15 m	4700137306	1	-
	Cable 4 x 1.5 mm ² , 15m	470W214847	-	1
	Cable CSA SOW 3xAWG14, 20m	470W367176	1	-
	Cable CSA SOW 4xAWG16, 20m	470W367175	-	1
3	Cable inlet cpl. (2, 4, 5)	470W214639	1	1
6	Cable sleeve	470W214394	1	-
	Cable sleeve	470W214838	-	1
7	Blind plug	470W214828	1	1
8	Washer	470W214825	1	1
9	Rubber gasket	470W214829	1	1
10	Washer	470W214833	1	1
11	Nut	4700W84207	4	4
12	Contacteur cover	470W212849	1	1
	Contacteur cover (high) ¹ For single phase 60Hz	470W724064	1	-
13	Wiring diagram 1 phase	470W214834	1	-
	Wiring diagram Δ	470W214836	-	1
	Wiring diagram Y	470W214835	-	1
14	Discharge 3" for hose	470W203562	1	1
	Discharge 3" BSP thread	470W203484	1	1
	Discharge 3" NPT thread	470W203570	1	1
	Discharge 4" for hose	470W203564	1	1
	Discharge 4" BSP-thread	470W203482	1	1
	Discharge 4" NPT thread	470W203572	1	1
15	Contacteur	See next pages	-	-
16	Screw	470W209902	5	4
17	Contacteur holder	470W214871	1	1
18	Washer	4700W51163	2	2
19	Teflon washer	470W214622	2	2
20	Data plate (CE)	470W743583	1	1
	Data plate (CSA)	470W743612	1	1
21	Rivet	4700W65431	4	4
22	Outer casing	470W241229	1	1
23	Washer	4700W51170	5	5
24	Discharge gasket	470W743466	1	1
25	Studbolt	4700W69642	2	2
26	Nut	4700W84210	2	2
27	Capacitor holder	470W214841	1	-
28	Capacitor compl. 50μF	470W743418	1	-
	Capacitor 30μF ¹ For single phase 60Hz	470W740188	2	-
29	O ring	4700W65112	2	2

¹ From S/N 1012273

INSTRUCTIONS MANUAL – WEDA 30

Ref	Designation	P/N	Qty -1--	Qty -3--
33	Rubber plug	470W224880	1	1
34	Spring washer	4700W58956	1	1
36	Bearing bracket, upper	470W208138	1	1
37	O ring	4700W65021	1	1
38	O ring	4700W65115	1	1
39	Stator	See next page	-	-
40	Stud bolt	4700W69617	2	2
41	Inner casing	470W724012	1	1
42	Stud bolt	470W224539	3	3
43	Ball bearing, upper	4700W61007	1	1
44	Rotor From S/N : 1000000	4812050226	1	-
		4812050509	1	-
	Rotor From S/N : 1000000	4812050227	-	1
		4812050510	-	1
45	O ring	4700W65119	1	1
46	Radial seal	470W740198	1	1
		4812050513	1	1
47	O ring	4700W65006	1	1
48	Oil plug	470W254042	1	1
49	Bearing holder lower	470W720024	1	1
		4812050508	1	1
50	Radial ball bearing	4700W61021	1	1
51	Circlip	4700W50659	1	1
52	O ring	4700W65103	1	1
53	O ring	470W740293	1	1
54	Seal holder	470W740280	1	1
55	Mechanical seal	470W740199	1	1
		4812050221	1	1
56	Sealing cover	470W740279	1	1
		4812050512	1	1
57	Oil	4700W60015	0.2 L	0.2 L
58	O ring	4700W65101	1	1
59	O ring	4700W65102	1	1
60	Flange plate	470W224910	1	1
61	Screw	4700W76242	6	6
62	Distance sleeve	470W740281	1	1
		4812050511	1	1
63	Wear plate	470W223522	1	1
64	Trimming spacer	470W224538	4	4
65	Impeller 60Hz low pressure	470W223610	1	1
66	Impeller 50 Hz low pressure	470W243237	1	1
67	Impeller 50 Hz medium pressure	470W223516	1	1
	Impeller 60 Hz medium pressure	470W223601	1	1
68	Nut	470W604272	1	1
69	Diffusor low pressure 50Hz	470W242231	1	1
	Diffusor low pressure 60Hz	470W222587	1	1
70	Diffusor med.pressure 60Hz	470W222523	1	1

INSTRUCTIONS MANUAL – WEDA 30

Ref	Designation	P/N	Qty -1--	Qty -3--
71	Strainer low pressure	470W222527	1	1
72	Strainer medium pressure	470W222526	1	1
	High steel strainer	470W714021	o	o
73	Nut	4700W84209	12	12
74	Float switch	470W214842	1	1
75	Cable inlet cpl. (8, 76, 77)	470W743411	1	1
78	Cable sleeve	470W214826	1	1
79	Clamp	470W209900	1	1
80	Float holder clamp	470W213843	1	1
81	Seal holder upper	470W208048	1	1
82	Insulation cap lower	470W214387	-	1
83	O Ring	4700W65106	-	1
84	Terminal block	470W213202	-	1
85	Contactor	See below	-	-
86	*Wearing sleeve	4812050228	1	1
87	*Oring	4700160314	1	1

o = option

Parts * marked are included in 44

STATOR AND CONTACTOR P/N

Power supply	Serial Number	Stator	Contactor	Stator Unit (39 + 41)
220-240V - 1 - 50Hz	Up to 1012272	470W724054	470W209923	470W743589
	From 1012273	4812050514	470W209923	4812050570
380-415V - 3 - 50Hz	Up to 1012272	470W724004	470W743441	470W743454
	From 1012273	4812050568	470W743441	4812050572
220-240V - 1 - 60Hz	Up to 1012272	470W724053	470W209923	470W743588
	From 1012273	4812050514	470W209923	4812050570
440-460V - 3 - 60Hz	Up to 1012272	470W724004	470W743441	470W743454
	From 1012273	4812050568	470W743441	4812050572
380V-3-60Hz	-	4812050239	4812050240	4812050245

MAINTENANCE KITS

Part number	Description	Parts included
470W743428	Gasket set	Parts 19 , 24 , 29, 37, 38, 45, 47, 52, 53, 58, 59 .
470W224912	Wear part set WEDA30L - 50Hz - Low pressure	Parts 63 , 64 , 66 , 69 .
470W224913	Wear part set WEDA30L - 60Hz - Low pressure	Parts 63 , 64 , 65 , 69 .
470W224914	Wear part set WEDA30N - 50Hz - Medium pressure	Parts 63, 64, 67, 70 .
470W224915	Wear part set WEDA30N - 60Hz - Medium pressure	Parts 63, 64, 67, 70 .
4700W60015	Oil amount 2L	-

DISCHARGES AVAILABLE

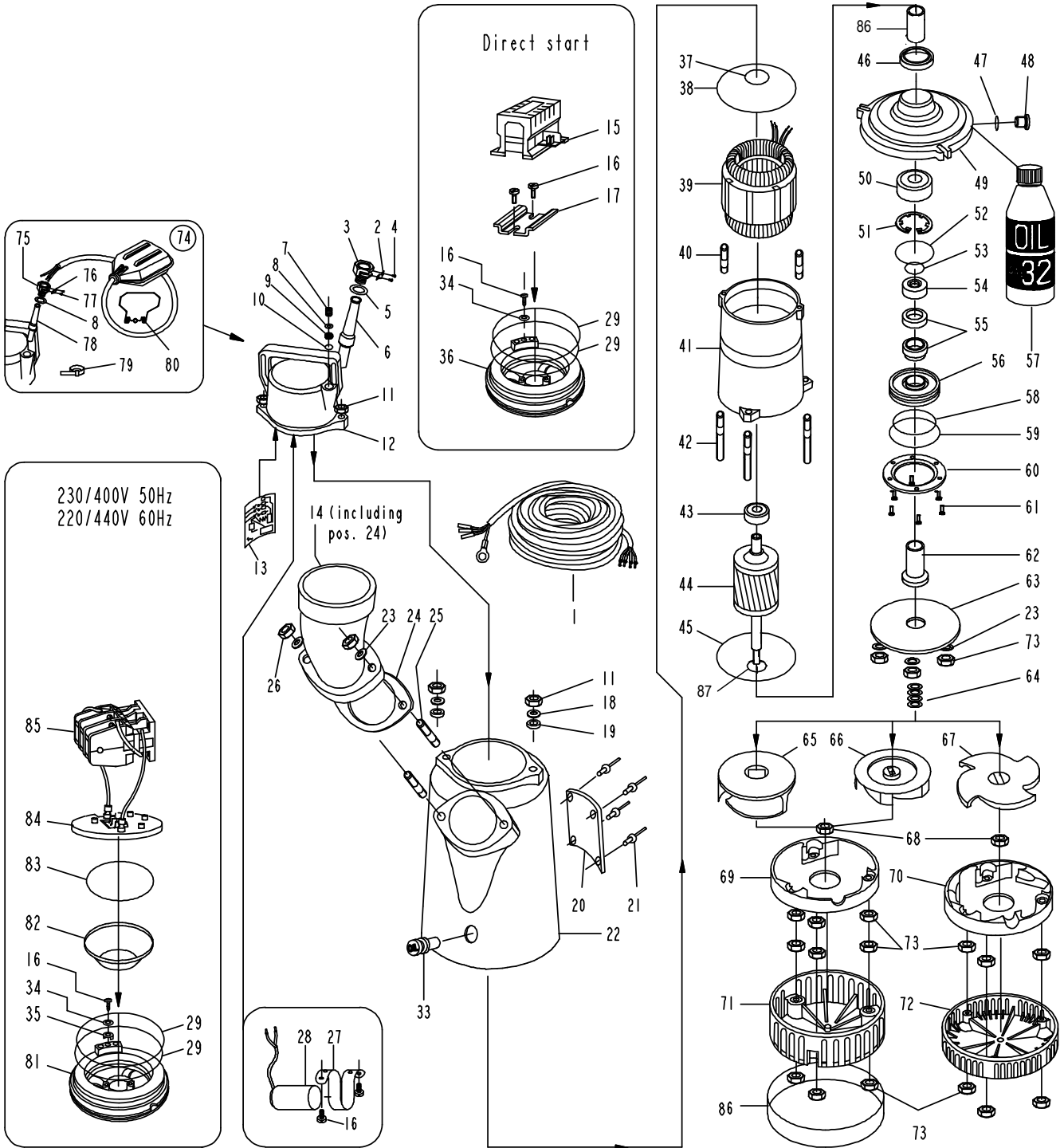
	P/N
3" Hose standard with 1 clamp	470W203562
3" BSP - thread	470W203484
3" NPT - thread	470W203570
4" Hose standard with 1 clamp	470W203564
4" BSP - thread	470W203482
4" NPT - thread	470W203572



The discharges have to be ordered separately .

Control relay : P/N 470W368983

INSTRUCTIONS MANUAL – WEDA 30



Erklæring om overensstemmelse ● Konformitätserklärung ● Declaration of conformity ● Declaración de conformidad ● Déclaration de conformité ● Ὁβαίωση συμφωνίας ● Dichlarazione di conformità ● Overeenkomstigheidsverklaring ● Erklæring om overenstemmelse ● Declaração de conformidade ● Yhdenmukaisuusvakuutus ● Försäkren om överensstämmelse ● Deklaracja zgodności

Producentens navn ● Name des Hertellers ● Manufacturer's name ● Nombre del fabricante ● Nom du fabricant ● Le fabricant ● Ονομα κατασκευαστή ● Nome del costruttore ● Fabrikant naam ● Produsentens navn ● Nome del fabricante ● Valmistajan nimi ● Tillverkarens namn

**Atlas Copco Portable OEM Solutions
Irmer+Elze Kompressoren GmbH
Mindener Str. 29
D-32547 Bad Oeynhausen, Germany**

Maskintype ● Pumpen Type ● Machine type ● Modelo de máquina ● Type de pompe ● Τύπος μηχανήματος ● Tipo di macchina ● Machinetype ● Mskintype ● Tipe de máquina ● Konetyppi ● Maskintyp

WEDA XX
Product number: XXXXXXXXX
Serial number: XXXXXXXXX

da Vi erklærer på eget ansvar, at følgende produkt som er omfattet af denne erklæring, og som er forsynet med CE-mærket, er i overensstemmelse med følgende standard(er) eller andre normative dokument(er): EN292-1, EN292-2, EN809, EN60204-1, EN60335-1, EN60335-2-41 i henhold til bestemmelserne i EG's Maskindirektiv 2006/42/EC, Foreskrifter Ang. Lavspænding 2006/95/EC, EMC-direktivet 2004/108/EC.

nl Wij verklaren geheel onder eigen verantwoordelijkheid dat het produkt waarop deze verklaring betrekking heeft, en is uitgerust met een CE –merk, in overeenstemming is met volgende normen: EN292-2, EN809, EN60204-1, EN60335-1, EN60335-2-41 volgens de bepalingen van de Machinerichtlijn 2006/42/EK, de Laagspanningsrichtlijn 2006/95/EK, de EMC-richtlijn 2004/108/EK.

de Wir erklären in alleiniger Verantwortung, daß das Produkt auf das sich diese Erklärung bezieht und welches mit dem CE-Zeichen versehen ist, mit den/der folgenden Norm(en) oder normativen Dokument(en) übereinstimmt: EN292-1, EN292-2, EN809, EN60204-1, EN60335-1, EN60335-2-41 gemäß den Bestimmungen der Richtlinie 2006/42/EC, Niederspannungsrichtlinien 2006/95/EC, EMC-Richtlinien 2004/108/EC.

no Vi erklærer under eget ansvar at følgende produktet som dekkes av denne erklæring, og som er CE-merket er i overensstemmelse med følgende standarder eller andre normative dokumenter: EN292-1, EN292-2, EN809, EN60204-1, EN60335-1, EN60335-2-41 i følge bestemmelsene i Maskindirektivet 2006/42/EC, low voltage-direktivet 2006/95/EC, EMC-direktivet 2004/108/EC.

en We declare under our sole responsibility that the product to which this declaration relates, and which is equipped with a CE-mark, is in conformity with the following standard(s) or other normative document(s): EN292-1, EN292-2, EN809, EN60204-1, EN60335-1, EN60335-2-41, following the provisions of Directive 2006/42/EC, the Low Voltage Directive 2006/95/EC, the EMC-Directive 2004/108/EC.

pt Declaramos sob nossa única responsabilidade que o produto a que se refer esta declaração, e que está equipado com uma marca CE, está em conformidade com as seguintes normas ou outros documentos normativos: EN292-1, EN292-2, EN809, EN60204-1, EN60335-1, EN60335-2-41 em conformidade com as disposições da Directiva 2006/42/CE, a Directiva de Baixa Voltagem 2006/95/CE, a Directiva EMC 2004/108/CE.

es Declaramos bajo nuestra única responsabilidad que el producto al que hace referencia esta declaración, y que lleva la marca CE, es conforme con las siguientes normas y otros documentos normativos EN292-1, EN292-2, EN809, EN60204-1, EN60335-1, EN60335-2-41. Todo ello de acuerdo con lo dispuesto en la Directiva 2006/42/CE, la Directiva Baja Tensión 2006/95/CE, la Directiva EMC 2004/108/CE.

fi Vakuutamme omalla vastuullamme että kone, jota tämä vakuutus koskee ja jota on varustettu CE-merkillä, on yhdenmukainen seuraavien normien ja ohjeellisten asiakirjojen kanssa: EN292-1, EN292-2, EN809, EN60204-1, EN60335-1, EN60335-2-41 noudattaen konedirektiivin 2006/42/ETY, jännitteitä koskeva direktiivi 2006/95/ETY, sähkömagneettista yhteensopivuutta koskeva direktiivi 2004/108/ETY.

fr Nous certifions que le produit, objet de cette déclaration, qui est équipé d'une marque CE, est conforme au(x) standard(s) suivant(s) ou autre(s) document(s) normatif(s) EN292-1, EN292-2, EN809, EN60204-1, EN60335-1, EN60335-2-41 conformément aux dispositions de la directive 2006/42/CE, la directive basse tension 2006/95/CE, la directive CEM 2004/108/CE.

sv Vi försäkrar under eget ansvar att produkten som omfattas av denna försäkran, och som är försedd med CE-märkt, är i överensstämmelse med följande standard eller andra regelgivande dokument: EN292-1, EN292-2, EN809, EN60204-1, EN60335-1, EN60335-2-41 enligt villkoren i Maskindirektiv EG's 2006/42/EC, lågspänningsdirektiv 2006/95/EC, och EMC-direktiv 2004/108/EC.

el Βεβαιώνουμε με δική μας ευθύνη ότι το προϊόν, που καλύπτεται απ αυτήν την βεβαίωση και είναι εφοδιασμένο με ΦΕ σήμανση, βρίσκεται σε συμφωνία με τα ακόλουθα στα ανάλογα πρότυπα ή άλλα καθοδηγητικά έγγραφα : EN292-1, EN292-2, EN809, EN60204-1, EN60335-1, EN60335-2-41 σύμφωνα με τους όρους των οδηγιών 2006/42/EOK, την Οδηγία Χαμηλής Τάσης 2006/95/EOK, την Οδηγία EMC 2004/108/EOK.

pl Niniejszym oświadczamy z pełną odpowiedzialnością, że produkt, którego dotyczy ta deklaracja i który jest oznaczony znakiem CE jest zgodny z następującymi standardami: EN292-1, EN292-2, EN809, EN60204-1, EN60335-1, EN60335-2-41 oraz z wymaganiami dyrektywy 2006/42/EC, dyrektywy niskonapięciowej 2006/95/EC i dyrektywy EMC 2004/108/CE.

it Noi dichiariamo sotto nostra esclusiva responsabilità che il prodotto a cui questa dichiarazione si riferisce, e che è provvisto di marchio CE, è conforme ai seguenti standard o altri documenti normativi: EN292-1, EN292-2, EN809, EN60204-1, EN60335-1, EN60335-2-41 secondo i requisiti della direttiva 2006/42/CE, direttiva Bassa Tensione 2006/95/CE, direttiva Compatibilità Elettromagnetica 2004/108/CE.

Date:

Irmer+Elze Kompressoren GmbH
Mindener Straße 29
D-32547 Bad Oeynhausen
Telefon: +49 (0) 57 31 / 18 01 - 0
Telefax: +49 (0) 57 31 / 18 01 - 66
www.atlascopco.com

Conformity of the specification to the directives

Engineering Manager
Ulrich Kirscht

U. Kirscht

Conformity of the product to the specification and by implication to the directives

Production Manager
Christian Hirschmann

Chr. Hirschmann

**Konformiteteserklæring ● Lieferantenerklärung ● Declaration of incorporation ●
Declaracion de incorporacion ● Déclaration d'incorporation ● Δήλωση κατασκευαστή ●
Dichlarazione di incorporazione ● Fabrikantenverklärung ● Produsenterklæring ● Declaração
de incorporação ● Valmistajavakuutus ● Tillverkardeklaration ● Deklaracja zgodności**

Producentens navn ● Name des Hertellers ●
Manufacturer's name ● Nombre del fabricante ● Nom du
fabricant ● Le fabricant ● Ονομα κατασκευαστή ● Nome
del costruttore ● Fabrikant naam ● Produsentens navn ●
Nome del fabricante ● Valmistajan nimi ● Tillverkarens
namn

Atlas Copco Portable OEM Solutions
Irmer+Elze Kompressoren GmbH
Mindener Str. 29
D-32547 Bad Oeynhausen, Germany

Maskintype ● Pumpen Type ● Machine type ● Modelo
de máquina ● Type de pompe ● Τύπος μηχανήματος ●
Tipo di macchina ● Machinetype ● Mskintype ● Tipe de
máquina ● Konetyppi ● Maskintyp

WEDA XX

Product number: XXXXXXXXX
Serial number: XXXXXXXXX

da Vi erklærer på eget ansvar, at følgende produkt som er omfattet af denne erklæring, og som ikke er CE-mærket, med de anvendte komponenter er i overensstemmelse med EG's Maskindirektiv 2006/42/EC, Foreskrifter Ang. Lavspænding 2006/95/EC, EMC-direktivet 2004/108/EC. Anvendte harmoniserede standarder: EN292-1, EN292-2, EN809, EN60204-1, EN60335-1, EN60335-2-41.

OBS! Den komplette maskine må ikke tages i brug før den er i overensstemmelse med kravene i EG's Maskindirektiv.

de Wir erklären in alleiniger Verantwortung, daß das Produkt auf das sich diese Erklärung bezieht und welches **nicht** mit dem CE-Zeichen versehen ist, in Übereinstimmung mit den Angaben Vorschriften 2006/42/EC, Niederspannungsrichtlinien 2006/95/EC, EMC-Richtlinien 2004/108/EC. Übereinstimmen, unter Standard EN292-1, EN292-2, EN809, EN60204-1, EN60335-1, EN60335-2-41 hergestellt wurde (falls diese Vorschriften zutreffen)

Wichtig! Die gesamte Anlage darf nicht benutzt werden, wenn nicht alle Angaben aus der Maschinenrichtlinie eingehalten wurden.

en We declare under our sole responsibility that the product to which this declaration relates, and which is not equipped with a CE-mark, is, where applicable, in conformity with the provisions of Directive 2006/42/EC, the Low Voltage Directive 2006/95/EC, the EMC-Directive 2004/108/EC. Applied harmonized standards EN292-1, EN292-2, EN809, EN60204-1, EN60335-1, EN60335-2-41.

NOTE! The complete machine must not be used until it is in conformity with the provisions in the Machine Directives.

es Declaramos bajo nuestra única responsabilidad que el producto al que hace referencia esta declaración, y que no lleva la marca CE, es conforme, en los aspectos que le afectan, con lo dispuesto en la Directiva 2006/42/CE, la Directiva Baja Tensión 2006/95/CE, la Directiva EMC 2004/108/CE. Las normas armonizadas aplicadas son: EN292-1, EN292-2, EN809, EN60204-1, EN60335-1, EN60335-2-41. **NOTA!** La máquina completa no debe ser utilizada hasta que se compruebe que es conforme con lo dispuesto en la Directiva de Maquinas

fr Nous certifions que le produit, objet de cette déclaration, qui n'est pas équipé d'une marque CE, est en conformité avec les dispositions directive 2006/42/CE, la directive basse tension 2006/95/CE, la directive CEM 2004/108/CE, là où elles sont applicables. Standards normalisés appliqués : EN292-1, EN292-2, EN809, EN60204-1, EN60335-1, EN60335-2-41. **NOTA !** la machine ne doit pas être utilisée si elle n'est pas conforme aux dispositions des directives.

el Βεβαιώνουμε με δική μας ευθύνη ότι το προϊόν, που καλύπτεται απ βεβαίωση και δεν είναι εφοδιασμένο με ΨΕ σήμανση, στα ανάλογα μέρη βρίσκεται σε συμφωνία με τις ανάλογες απαιτήσεις την Οδηγία 2006/42/ΕΟΚ, την Οδηγία Χαμηλής Τάσης 2006/95/ΕΟΚ, την Οδηγία EMC 2004/108/ΕΟΚ. Εφαρμόστηκαν τα πρότυπα εναρμόνισης : EN292-1, EN292-2, EN809, EN60204-1, EN60335-1, EN60335-2-41. **ΠΡΟΣΟΧΗ !** Το κομπλέ μηχανήμα δεν επιτρέπεται να τεθεί σε λειτουργία παρά μόνον όταν είναι σύμφωνο με τις απαιτήσεις της Οδηγίας Μηχανημάτων της ΕΟΚ.

it Noi dichiariamo sotto nostra esclusiva responsabilità che il prodotto a cui questa dichiarazione si riferisce, e che non è provvisto di marchio CE, è dove applicabile, conforme ai requisiti della direttiva 2006/42/CE, direttiva Bassa Tensione 2006/95/CE, direttiva Compatibilità Elettromagnetica 2004/108/CE. Standard armonizzati applicati: EN292-1, EN292-2, EN809, EN60204-1, EN60335-1, EN60335-2-41. **NOTA !** La macchina completa non deve essere usta finche essa sia conforme alla direttiva macchine.

nl Wij verklaren geheel onder eigen verantwoordelijkheid dat het product waarop deze verklaring betrekking heeft, en welke niet is uitgerust met een CE –merk, als onderdeel bestemd is om te worden ingebouwd in een machine. Op dit geheel is de Machinerichtlijn 2006/42/EK, de Laagspanningsrichtlijn 2006/95/EK, de EMC-richtlijn 2004/108/EK van toepassing. Toegepaste geharmoniseerde normen: EN292-2, EN809, EN60204-1, EN60335-1, EN60335-2-41. **NOOT !** Het is verboden bovengenoemd product in gebruik te stellen voordat de machine waarin het wordt ingebouwd in overeenstemming met de bepalingen van de Machinerichtlijn is verklaard.

no Vi erklærer under eget ansvar at produktet som omfattes av denne erklæring, og som ikke er CE-merket er produsert isamsavar med krav i Maskindirektivet 2006/42/EC, low voltage-direktivet 2006/95/EC, EMC-direktivet 2004/108/EC. Harmonar med standard: EN292-1, EN292-2, EN809, EN60204-1, EN60335-1, EN60335-2-41.

OBS! Den komplette maskine får ikke tas i bruk før den overenstemmer med kravene i maskindirektivet.

pt Declaramos sob nossa única responsabilidade que o produto a que se refer esta declaração, e que não está equipada com uma marca CE, está, quando aplicável, em conformidade com as disposições da Directiva 2006/42/CE, a Directiva de Baixa Voltagem 2006/95/CE, a Directiva EMC 2004/108/CE. Normas de harmonização aplicadas: EN292-1, EN292-2, EN809, EN60204-1, EN60335-1, EN60335-2-41.

NOTA ! A máquina completa não deve ser utilizada até que esteja em conformidade com as disposições das Directivas de Maquinaria.

fi Vakuutamme omalla vastuullamme että tuote, jota tämä vakuutus koskee ja jota ei ole varustettu CE-merkillä, on soveltuvin osin yhdenmukainen EU:n konedirektiivin 2006/42/ETY, jännitteitä koskeva direktiivi 2006/95/ETY, sähkömagneettista yhteensopivuutta koskeva direktiivi 2004/108/ETY. Soveltuvat harmonisoidut standardit: EN292-1, EN292-2, EN809, EN60204-1, EN60335-1, EN60335-2-41.

Huom! Täydellistä konetta ei saa ottaa käyttöön ennekuin se on yhdenmukainen EU:n konedirektiivin kanssa.

sv Vi försäkrar under eget ansvar att produkten som omfattas av denna försäkran, och som ej är CE-märkt, i tillämpliga delar överensstämmer med kraven i EG's Maskindirektiv 2006/42/EC, lågspänningsdirektivet 2006/95/EC, och EMC-direktivet 2004/108/EC. Tillämpliga harmoniserande standarder: EN292-1, EN292-2, EN809, EN60204-1, EN60335-1, EN60335-2-41.

OBS! Den kompletta maskinen får inte tas i bruk förrän den överensstämmer med kraven i EG's Maskindirektiv.

pl Niniejszym oświadczamy z pełną odpowiedzialnością, że produkt, którego dotyczy ta deklaracja i który nie jest oznaczony znakiem CE jest zgodny z wymaganiami dyrektywy 2006/42/EC, dyrektywy niskonapięciowej 2006/95/EC, dyrektywy EMC 2004/108/EC oraz ujednoliconych standardów EN292-1, EN292-2, EN809, EN60204-1, EN60335-1, EN60335-2-41.

Uwaga! Urządzenie nie może być używane jeżeli nie jest zaopatrzone w deklarację zgodności.

Conformity of the specification to the directives
Engineering Manager
Ulrich Kirscht

Conformity of the product to the specification and by implication to the directives
Production Manager
Christian Hirschmann

U. Kirscht *Chr. Hirschmann*



MASKINSALG ^{A/S}
UTSTYR FOR INDUSTRI OG ANLEGG
Blindheimsveien 1, 5131 Nyborg
www.maskinsalg.com
SALG - SERVICE - UMLEIE Tlf. 55 19 96 20

PM number: 2954 5290 00

Atlas Copco Portable OEM Solutions
Irmer+Elze Kompressoren GmbH

Mindener Str. 29, 32547 Bad Oeynhausen, Germany, Tel: +49 (0) 57 31 / 18 01 - 0,
Fax: +49 (0) 57 31 / 18 01 - 0

We reserve the right to change specifications without notice. Photos and illustrations do not always show standard versions of machines.

www.atlascopco.com